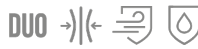
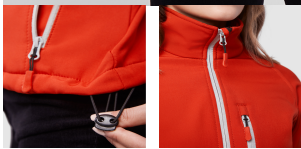


**ANTARTIDA WOMAN SS6433**



**DESCRIPTION**

2-layer softshell with inverted sealed-effect zip, with matching chin protector and zipper puller. Three outside pockets with matching zip and puller. Velcro fasteners in cuffs. Bottom hem with elastic drawcord and stoppers.

**COMPOSITION**

Two layers. Shell: 92 % polyester / 8% elastane. Lining: 100% extra warm microfleece polyester. 300 gsm.

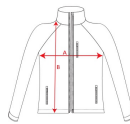
**REMARKS**

\*Wind-proof fabric. \*Water resistant \*Duo Concept. \*Slim-fit in women's model. \*Raglan sleeve only in women's model. \*Water column: 1000 mm. \*Always consider the limitations of this type of fabric and the need to protect the ink from migrations when printing it. \*DTF printing not recommended for this model.

**SIZES**

Adults:: S · M · L · XL · 2XL · 3XL / :

**SCHEME**



**QUANTITIES**

	Box	Pack
<b>Adults:</b>	15 un.	1 un.

**COLORS**



**SIZES**

Adults:	S	M	L	XL	2XL	3XL
WIDTH (A)	46cm	49cm	52cm	55cm	58cm	60cm
LONG (B)	62cm	64cm	66cm	68cm	70cm	72cm

\*[Measured from the edge 1 cm below the sleeves / Measured from the highest point of the shoulder to the end of the garment]

**PRINTING TECHNIQUES AVAILABLE**

