

# NEW ENDLESS POSSIBILITIES ON GIFTING





## INTRODUCTION

Welcome to our 2024 inspirational gifting catalogue showcasing exclusively NEW products for the upcoming season.

Discover the endless possibilities this collection has to offer: a wide selection of more sustainable options, Recycled Classics, and products made in Europe. A new collection of brands, on-trend products, and colour ranges to match your logo, for any occasion and budget.

All selected with care: Products that last, and people love to use, with many customisation options. A collection perfectly suited to put the end customer's brand in the spotlight.

Supported by mood scenes, created with our in-house logo tool, GIFs, videos, and mood imagery. As we empower selling, these resources are available and ready for you to use in your marketing communications. The possibilities are endless...

THE  
NEW  
TREN  
D  
CON



8



28



54



76



92



120

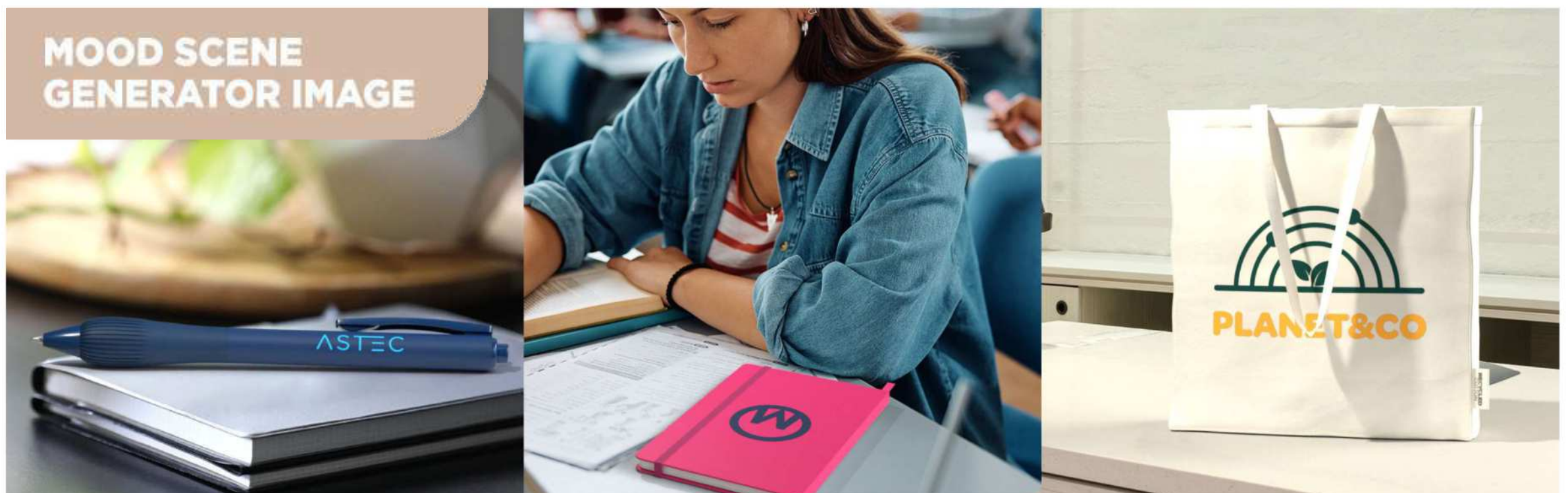


# MOOD SCENE GENERATOR

In our market we are used to quoting with product visuals: we show end user logos on product images. Visualising a logo on a mood image takes a lot of “graphic” time, time you can’t afford to miss for daily quotes.

We are very proud to announce that we have found a digital solution for you. Have you already tried our Mood Scene Generator? With just a single click you can visualise a product with your customers’ logo in a mood image. You can have a bottle placed in a very nice home office environment, or a backpack on a track field. Select the mood scene, download it, and share it with your customers, they will love it!

In this inspirational gifting catalogue we have incorporated imagery created by the mood scene generator. All of these images are highlighted with the tag **“Mood scene generator image”**. We invite you to use the mood scene generator to create inspirational mood imagery with just a click.







# DRINKWARE







## DRINKWARE

Our offer of new drinkware is selected with care. Endless possibilities for every occasion and budget: The Illuminate bottle for an active lifestyle, the Java tumbler for the office or on the go. Discover more sustainable options like our new Recycled Classic Sullivan flask, on-trend items like the Melbourne and Sydney mugs, or new additions to our retail brands CamelBak and Ocean Bottle.

Branded with your logo, it's the perfect way to promote your brand wherever you go.

# MELBOURNE

1200 ml



100801 | MELBOURNE 1200 ML RCS CERTIFIED  
MUG WITH STRAW | Recycled stainless  
steel | 2.323 kg CO<sub>2</sub>e



Certified by Control Union  
CU 1019665







Certified by Control Union  
CU 1019665



# SYDNEY 1200 ml



100802 | SYDNEY 1200 ML DOUBLE WALL  
RCS CERTIFIED COPPER VACUUM INSULATED  
MUG WITH STRAW | Recycled stainless  
steel | 2.801 kg CO<sub>2</sub>e  
●●●●●

# Ocean bottle



Learn more >







# MUG

100817 | OCEAN BOTTLE 350 ML INSULATED TRAVEL MUG | Recycled stainless steel | Ø 12 x 11.2 cm | 1.493 kg CO<sub>2</sub>e

# TUMBLER

100818 | OCEAN BOTTLE 350 ML INSULATED TUMBLER | Recycled stainless steel | Ø 8.2 x 13.7 cm | 1.144 kg CO<sub>2</sub>e



100755 | CAMELBAK® FORGE FLOW 500 ML VACUUM INSULATED TUMBLER | Stainless Steel | Ø 7.2 x 22.1 cm | 2.080 kg CO<sub>2</sub>e

# GOT YOUR BAK™ LIFETIME GUARANTEE\*

\*For all CamelBak bottles covering manufacturing defects in materials and workmanship for the lifetime of the product.



100756 | CAMELBAK® FORGE FLOW 350 ML VACUUM INSULATED TUMBLER | Stainless Steel | Ø 7.2 x 18.3 cm | 2.080 kg CO<sub>2</sub>e



# CAMELBAK®



[Learn more >](#)





**100809 | FIKA 340 ML TUMBLER WITH BAMBOO SLEEVE** | Stoneware | 6.4 x 11.7 cm | 0.360 kg CO<sub>2</sub>e  
●●○



**100807 | COLOSSAL 500 ML CERAMIC MUG** | Ceramic | 15.5 x 10.5 cm | 1.863 kg CO<sub>2</sub>e  
●●●○



**100805 | OLYMPIA 140 ML STACKABLE EXPRESSO CUP WITH CLAY BOTTOM** | Ceramic | 5 x 7.1 cm | 0.538 kg CO<sub>2</sub>e  
●●●○





# JAVA

## 330 ml



100808 | JAVA 330 ML CERAMIC TUMBLER WITH SILICONE WRAP AND PLASTIC LID | Ceramic | 1.230 kg CO<sub>2</sub>e





Certified by Control Union  
CU 1019665

**100804 | DUO 80 ML RCS CERTIFIED STAINLESS STEEL ESPRESSO CUP SET**  
●● Recycled stainless steel | 0.299 kg CO<sub>2</sub>e



# DUO

80 ml



# RECYCLED CLASSICS







In our pursuit of environmental responsibility. We launched new and recycled versions of our bestselling articles. We are striving to replace existing products with more sustainable alternatives.



Certified by Control Union  
CU 1019665



**100799 | CORZO 350 ML RCS CERTIFIED COPPER VACUUM INSULATED CUP** | Recycled stainless steel | 8.9 x 11.42 cm | 0.851 kg CO<sub>2</sub>e  
●●●●●○

NEW COLOURS



**100777 | SKY 650 ML RECYCLED PLASTIC WATER BOTTLE** | Recycled PET  
Plastic | Ø 6.75 x 6.75 x 25.4 x 6.75 cm | 0.230 kg CO<sub>2</sub>e  
●●●●○



**100737 | BODHI 500 ML RPET WATER BOTTLE** | Recycled PET  
Plastic | 6.5 x 6.5 x 20 cm | 0.230 kg CO<sub>2</sub>e  
●●●●●○



Certified by Control Union  
CU 1019665



**100785 | BEBO 500 ML RECYCLED PLASTIC WATER BOTTLE** | RCS certified  
recycled PET plastic | Ø 4.58 x 6.85 x 19.3 x 6.85 cm | 0.230 kg CO<sub>2</sub>e  
●●●●○



# ILLUMINATE

## 600 ml





100679 | ZIGGS 650 ML RECYCLED PLASTIC WATER BOTTLE | Recycled PET  
Plastic | Ø 7.4 x 20.8 cm | 0.265 kg CO<sub>2</sub>e  
●●○



In our pursuit of environmental responsibility, we launched new and recycled versions of our bestselling articles. We are striving to replace existing products with a more sustainable option.



NEW  
COLOURS

# ZIGGS

650 ml





# TRINITY

## 600 ml

Designed for sports, travel, and everyday life, the Trinity water bottle is your perfect companion wherever you go. Its carry loop fits comfortably in your hand and also allows you to attach the bottle with a carabiner.



100815 | TRINITY 600 ML GRS CERTIFIED RECYCLED ALUMINIUM WATER BOTTLE WITH RPET LID | Recycled Aluminium | 0.412 kg CO<sub>2</sub>e







Certified by Control Union  
CU 1019665

**100790 | COVE 500 ML RCS CERTIFIED RECYCLED STAINLESS STEEL VACUUM INSULATED BOTTLE** | Recycled stainless steel | Ø 7.1 x 7.1 x 27 x 7.1 cm | 0.940 kg CO<sub>2</sub>e  
●●●●●●●●



Certified by Control Union  
CU 1019665

**100736 | VASA 500 ML RCS CERTIFIED RECYCLED STAINLESS STEEL COPPER VACUUM INSULATED BOTTLE** | Recycled stainless steel - PP Plastic | Ø 7.05 x 26.4 cm | 1.450 kg CO<sub>2</sub>e  
●●●●●●●●



100798 | SPRING 500 ML RCS CERTIFIED COPPER VACUUM INSULATED BOTTLE | Recycled stainless steel | 7.4 x 22.4 cm | 1.547 kg CO<sub>2</sub>e  
●●●●●





In our pursuit of environmental responsibility, we launch the recycled version of our bestselling Sullivan vacuum insulated flask. We are striving to replace existing products with a more sustainable option.



Certified by Control Union  
CU 1019665



**I AM  
MADE FROM  
RECYCLED  
STAINLESS STEEL**

**100797 | SULLIVAN 750 ML RCS CERTIFIED VACUUM INSULATED FLASK** | Recycled stainless steel | 7.9 x 28.7 cm | 2.321 kg CO<sub>2</sub>e  
●○○



# STATIONERY & WRITING







## STATIONERY & WRITING

People will always turn to notebooks and pens for their timeless charm and connection to creativity.

Discover our new collection of gift sets and wide colour pen ranges to match your logo. More sustainable options with an offer on innovative materials like the Liliana notebook made from sugarcane, or our new collection of pens made in Europe. Well-known brands like Parker with the Jotter Special Edition Global Icons – where each pen is dedicated to a single city with each finish telling the story of its architecture, culture, and people. Brands to support your branding and much more, all selected with care. The possibilities are endless.

# Lorena Recycled plastic ballpoint pen



107921  | 107922  | LORENA RABS BALLPOINT PEN | Recycled ABS Plastic | Ø 1.02 x 14.3 cm | 0.024 kg CO<sub>2</sub>e





107909 | 107910 | ELSA RECYCLED PLASTIC BALLPOINT PEN | Recycled ABS Plastic | Ø 1.1 x 13.9 cm | 0.022 kg CO<sub>2</sub>e

107926 | 107927 | LUCIA RECYCLED PLASTIC BALLPOINT PEN | Recycled Plastic | Ø 1.3 x 14.5 cm | 0.024 kg CO<sub>2</sub>e

107928 | 107929 | MARTHA RECYCLED PLASTIC BALLPOINT PEN | Recycled Plastic | Ø 1.05 x 14.8 cm | 0.029 kg CO<sub>2</sub>e

107930 | ANA RECYCLED PLASTIC BALLPOINT PEN | Recycled Plastic | Ø 1 x 14.2 cm | 0.038 kg CO<sub>2</sub>e



# DELFINA BALLPOINT PEN

- Functions as a phone holder
- FSC certified bamboo

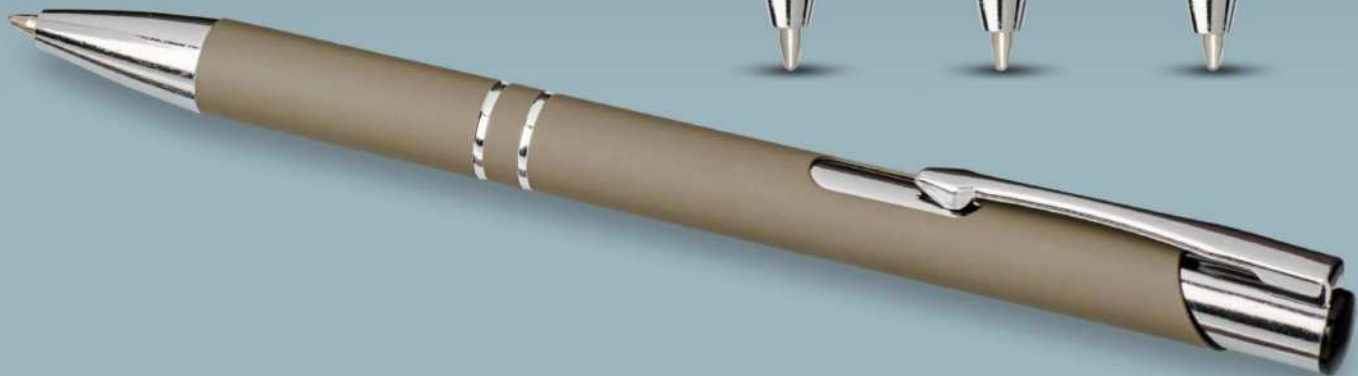


107898  | 107899  | **DELFINA PHONE HOLDER PEN** | FSC  
certified bamboo | Ø 1 x 14.7 cm | 0.018 kg CO<sub>2</sub>e





NEW  
COLOURS



107437 ● | MONETA SOFT TOUCH BALLPOINT  
PEN | Aluminium | Ø 0.8 x 13.5 cm | 0.147 kg CO<sub>2</sub>e  
● ● ● ● ● ●

MOOD SCENE  
GENERATOR IMAGE



Certified by Control Union  
CU 1019665

**107908** | **DORA RECYCLED ALUMINIUM MULTIFUNCTIONAL PEN** | Recycled  
Aluminium | Ø 1 x 15.3 cm | 0.088 kg CO<sub>2</sub>e



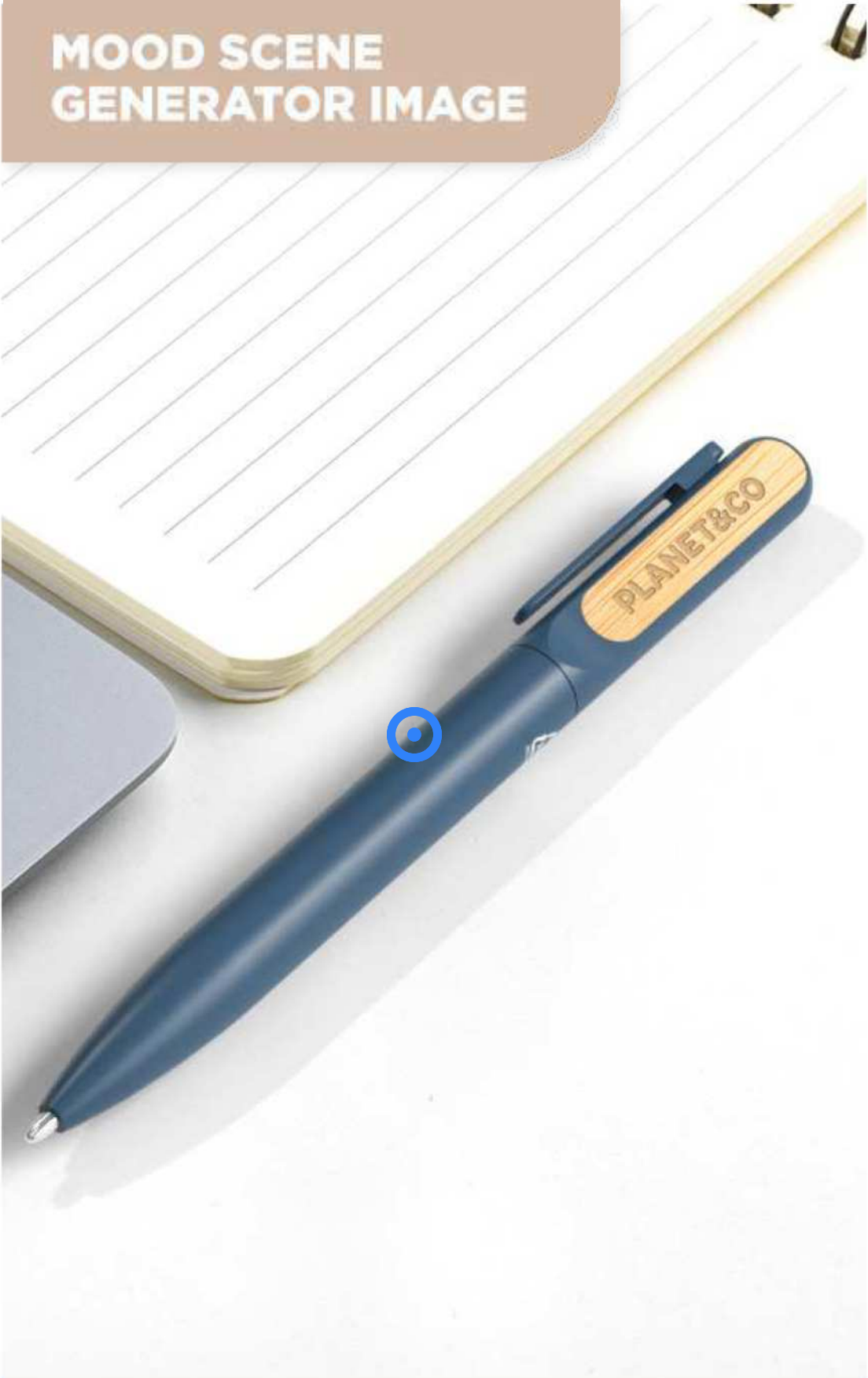
Certified by Control Union  
CU 1019665

**107916** | **107917** | **JUANA RECYCLED ALUMINIUM BALLPOINT PEN** | Recycled  
Aluminium | Ø 1.5 x 14.5 cm | 0.071 kg CO<sub>2</sub>e



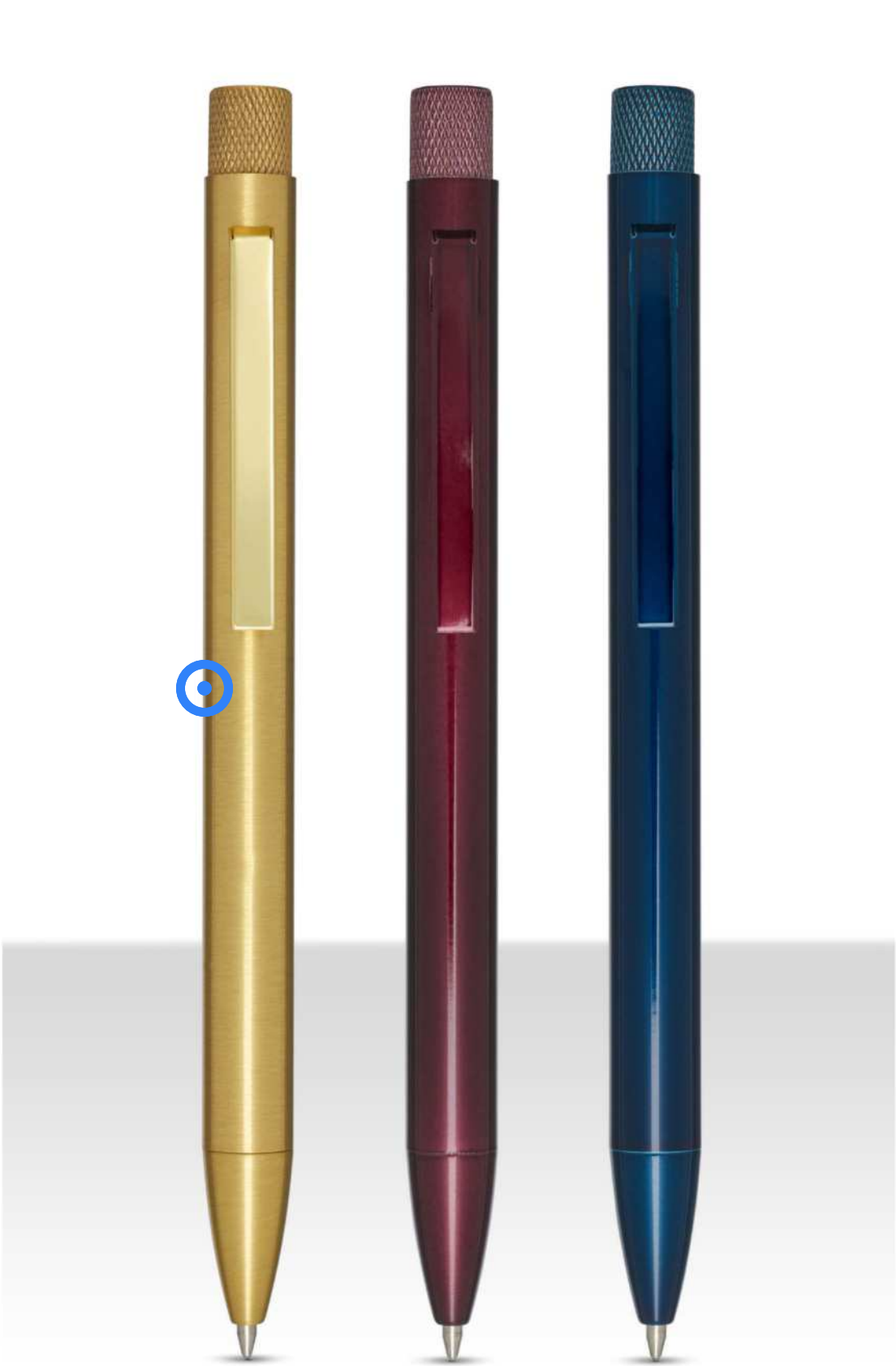


MOOD SCENE  
GENERATOR IMAGE



Certified by Control Union  
CU 1019665

**107914** | **107915** | **BLANCA RECYCLED ALUMINIUM BALLPOINT PEN** | Recycled  
Aluminium | Ø 1.2 x 14 cm | 0.083 kg CO<sub>2</sub>e



Certified by Control Union  
CU 1019665

**107918** | **107919** | **BEATRIZ RECYCLED BRASS BALLPOINT PEN** | Recycled  
brass | 0.127 kg CO<sub>2</sub>e





# LUXE



107924  | LEGATO BALLPOINT AND ROLLERBALL PEN SET | Recycled  
brass | Ø 1.2 x 14.1 cm | 0.284 kg CO<sub>2</sub>e



# LUXE



107925 ♦ | LEGATO A5 NOTEBOOK WITH BALLPOINT AND ROLLERBALL PEN  
SET | FSC certified paper | 24.5 x 23.3 x 2 cm | 0.457 kg CO<sub>2</sub>e





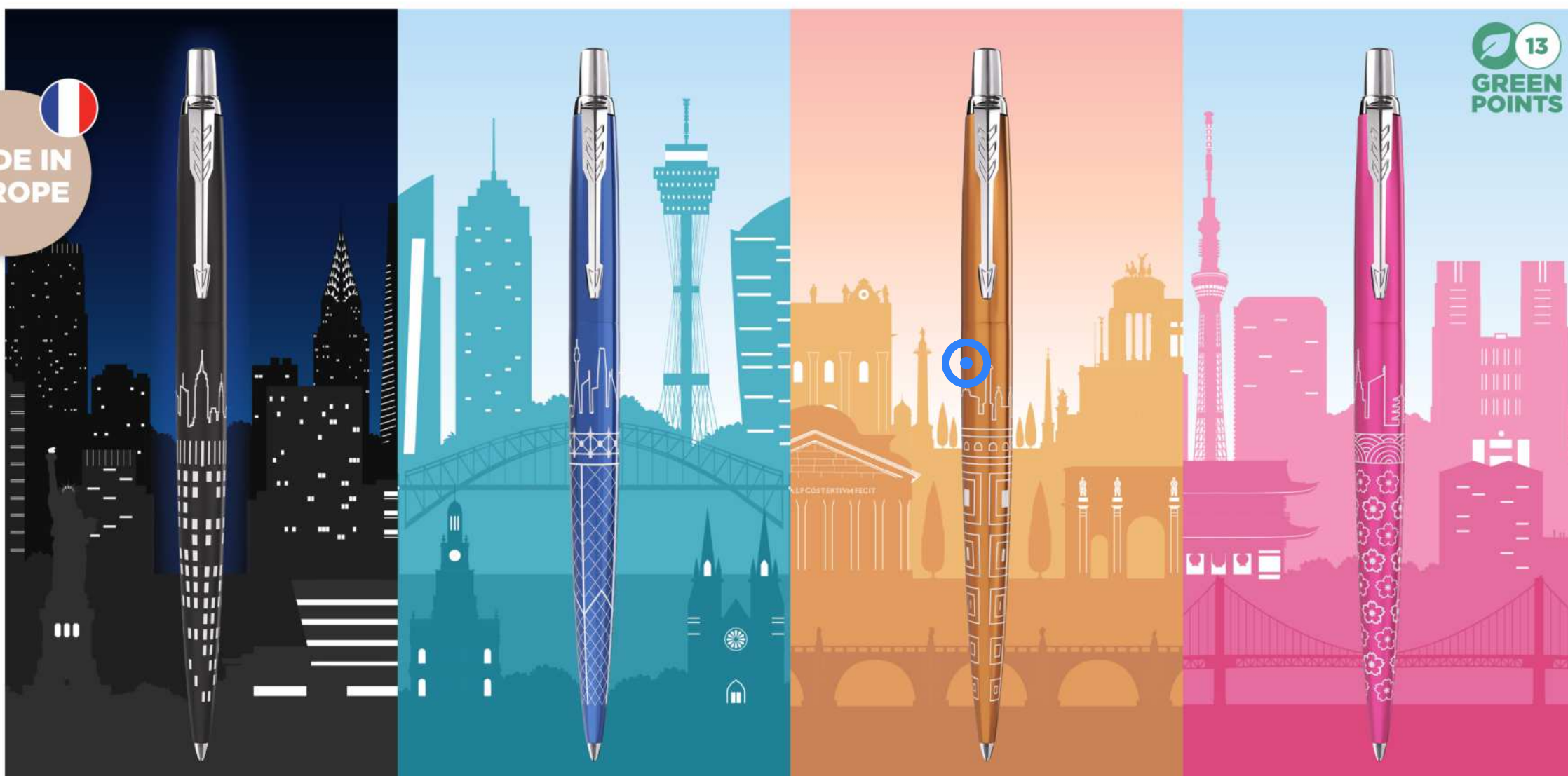


# PARKER

EST. 1888

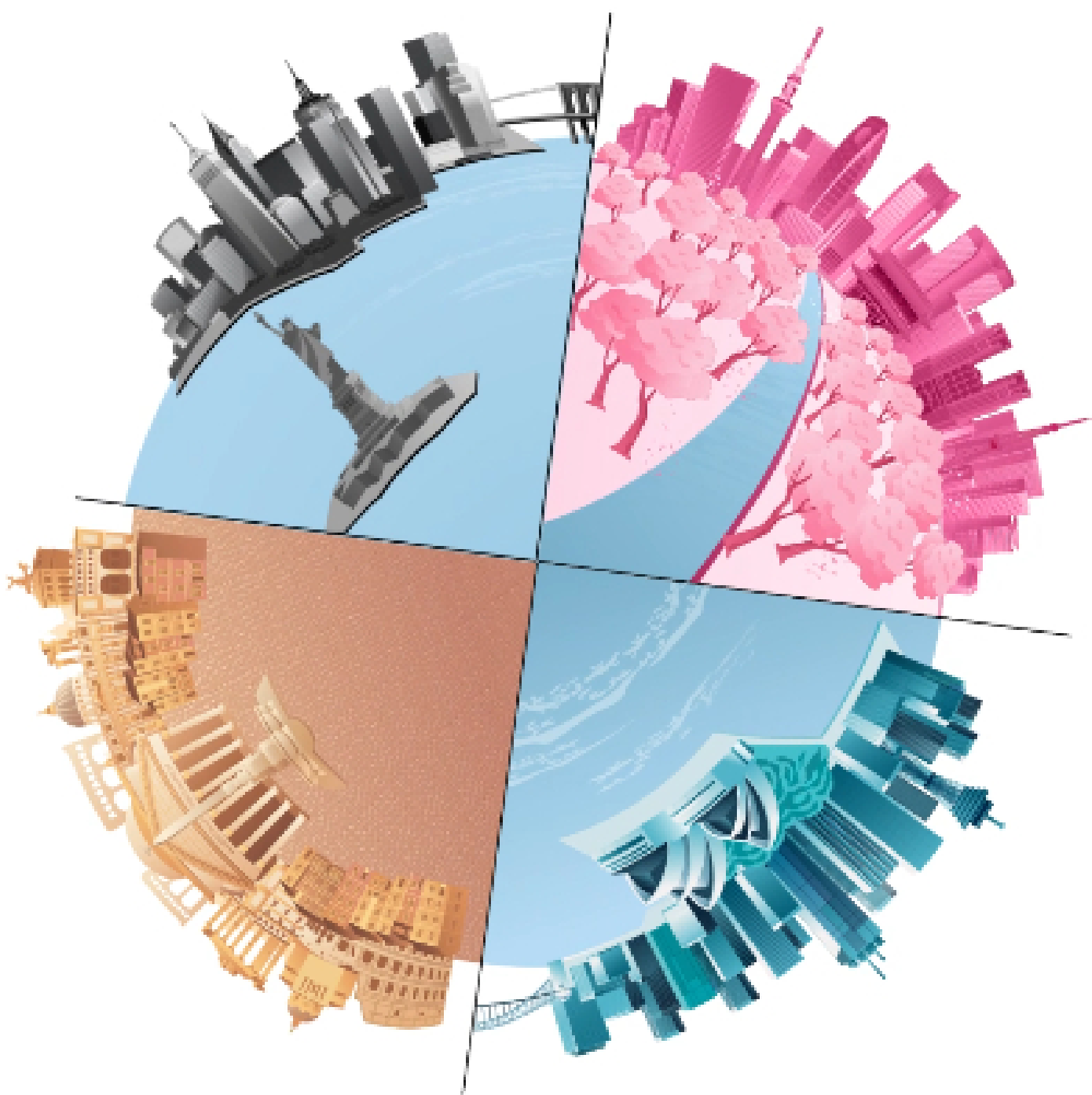
## JOTTER SPECIAL EDITION GLOBAL ICONS

  
**MADE IN  
EUROPE**



 13  
**GREEN  
POINTS**





## **PARKER JOTTER'S 70<sup>TH</sup> ANNIVERSARY**

2024 marks the 70th anniversary of the legendary design icon, highlighting its enduring appeal and legacy. For seven decades, the Parker Jotter has been at the forefront of innovation and timeless style.

### **JOTTER SPECIAL EDITION GLOBAL ICONS**

Taking their inspiration from all four corners of the globe, each special edition pen is dedicated to a single city with each finish telling the story of its architecture, culture, and people. Distilling their story into a single pen design, the new Jotter collection will turn every day into an epic adventure.

**Learn more >**

MY STYLE,  
MY STATEMENT

MADE IN  
EUROPE



HÉMISPHERE COLOUR  
BLOCKING COLLECTION

**WATERMAN**  
PARIS



**WATERMAN**  
PARIS

107961  | HEMISPHERE COLOUR BLOCKING BALLPOINT PEN WITH PALLADIUM  
TRIM | Metal | Ø 1.1 x 13.7 cm | 0.086 kg CO<sub>2</sub>e

Learn more >





**WATERMAN**  
PARIS

**107960** | **HEMISPHERE COLOUR BLOCKING ROLLERBALL PEN WITH PALLADIUM TRIM** | Metal | Ø 1.1 x 13.7 cm | 0.086 kg CO<sub>2</sub>e



**WATERMAN**  
PARIS

**107934** | **HEMISPHERE COLOUR BLOCKING FOUNTAIN PEN WITH PALLADIUM TRIM** | Metal | Ø 1.1 x 13.7 cm | 0.086 kg CO<sub>2</sub>e





107911 | LAURA A5 HARD COVER NOTEBOOK AND BALLPOINT PEN GIFT SET | FSC certified paper | 32 x 27 x 10.3 cm | 2.767 kg CO<sub>2</sub>e







107912 | CARMEN A5 HARD COVER NOTEBOOK AND BALLPOINT PEN GIFT SET | FSC certified paper | 36 x 30 x 8 cm | 3.018 kg CO<sub>2</sub>e





106269 | ZUSE A7 RECYCLED JOTTER NOTEPAD WITH PEN | Recycled paper | 13.4 x 7.8 x 1.5 cm | 0.133 kg CO<sub>2</sub>e  
●●●●●





33  
GREEN  
POINTS

NEW  
COLOURS

106268 | **PRIESTLY RECYCLED NOTEBOOK WITH PEN** | Recycled paper | 18 x 14 x 1 cm | 0.296 kg CO<sub>2</sub>e

44  
GREEN  
POINTS

107903 | **NELIDA A5 RECYCLED CARDBOARD HARD COVER NOTEBOOK** | FSC certified paper | 21 x 14.5 cm | 0.386 kg CO<sub>2</sub>e

40  
GREEN  
POINTS

NEW  
COLOURS

106904 | **SPECTRUM A5 HARD COVER NOTEBOOK** | PU Plastic | 21.1 x 14 x 1.2 cm | 0.476 kg CO<sub>2</sub>e

40  
GREEN  
POINTS

NEW  
COLOURS

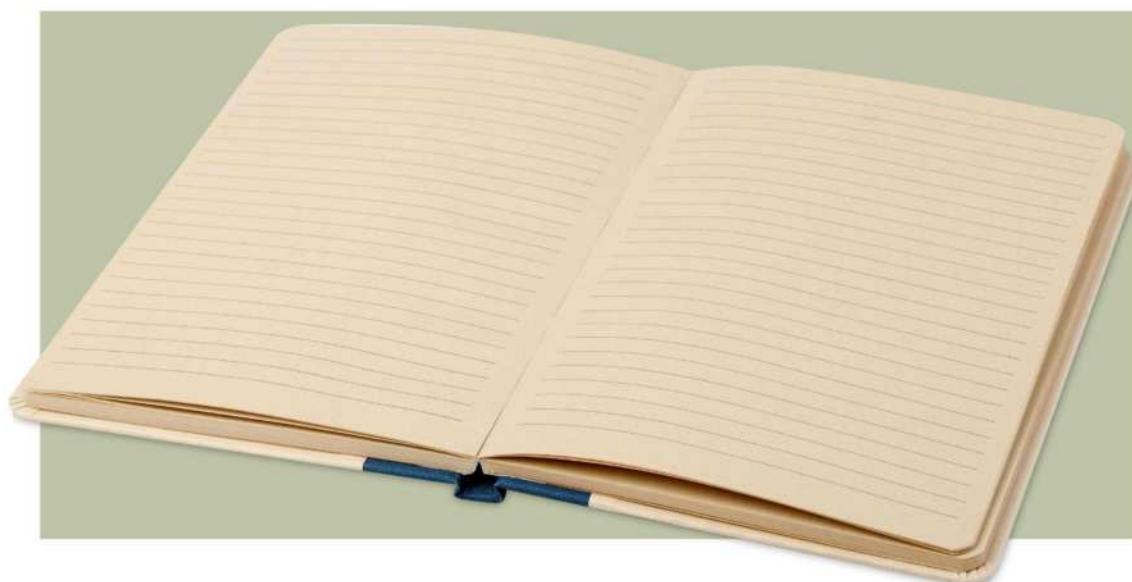
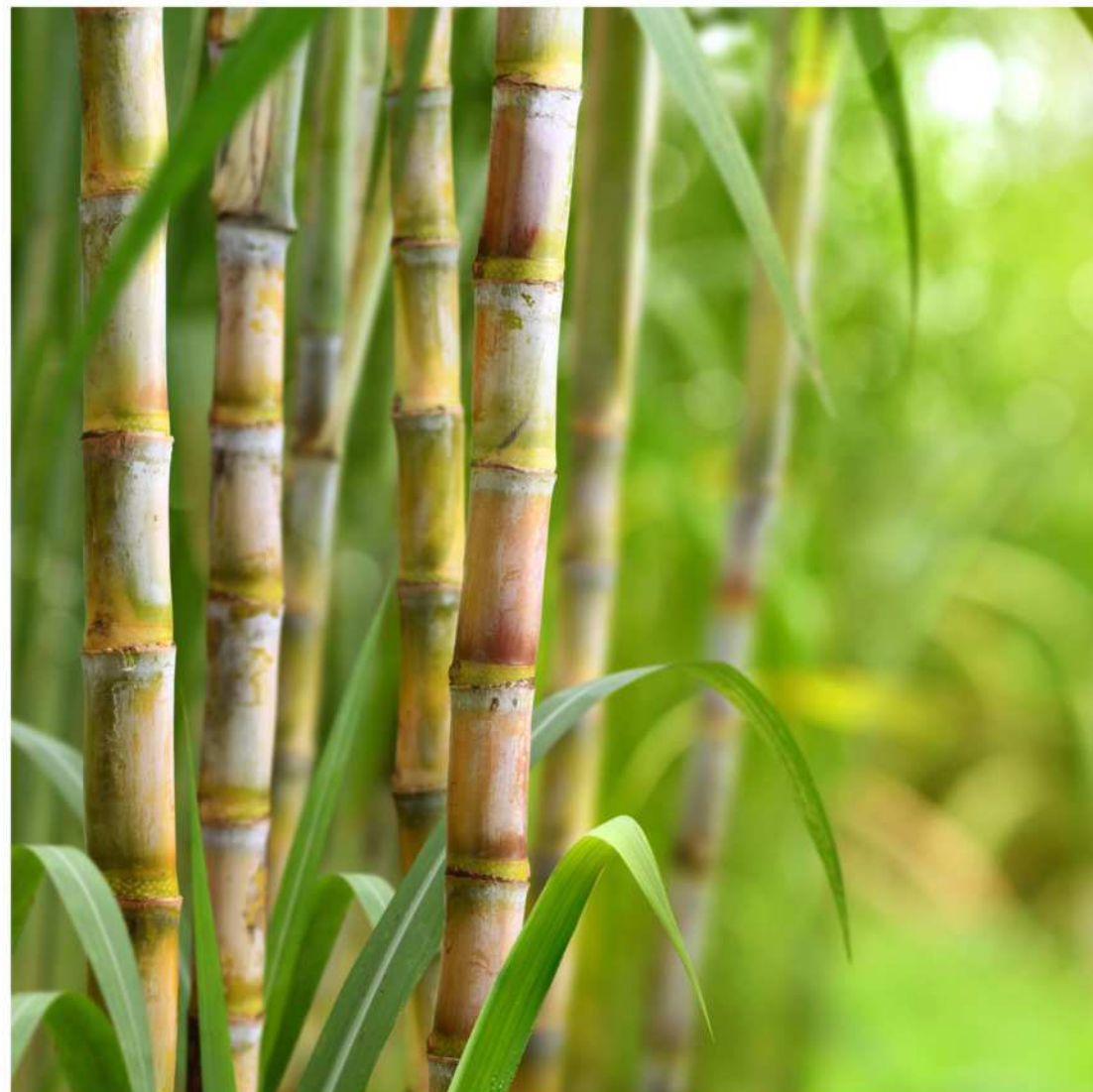
MARKS AN

107763 | **HONUA A5 RECYCLED PAPER NOTEBOOK WITH RECYCLED PET COVER** | Recycled PET Plastic | 21.5 x 14.5 cm | 0.744 kg CO<sub>2</sub>e



# LILIANA A5

## SUGAR CANE



18  
GREEN  
POINTS



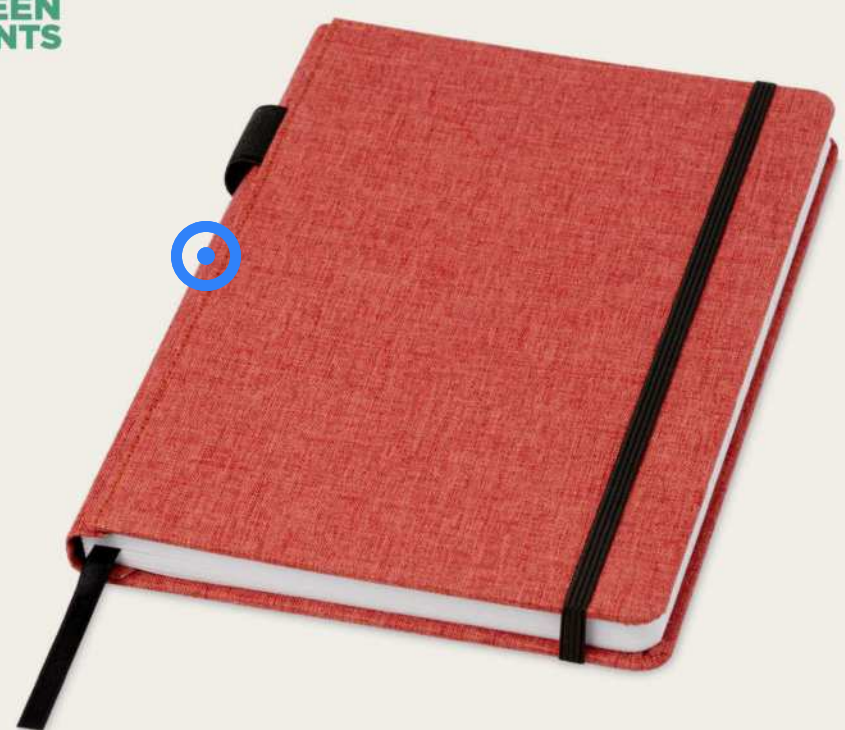
107923 | LILIANA A5 SUGAR CANE PLASTIC HARD COVER NOTEBOOK | Fruit  
paper | 21 x 14.5 cm | 0.608 kg CO<sub>2</sub>e







107900 | **RAMONA A5 COTTON NOTEBOOK** | FSC certified paper | 21.1 x 14.5 cm | 0.386 kg CO<sub>2</sub>e



MARKS  **AN**  
107742 | **ORIN A5 RPET NOTEBOOK** | Recycled Plastic | 21.5 x 14.5 cm | 0.729 kg CO<sub>2</sub>e





# FELT & CORK



107907 | VIVIANA A5 RECYCLED FELT AND CORK NOTEBOOK | FSC certified  
paper | 21 x 14.6 cm | 0.451 kg CO<sub>2</sub>e





107913 | VERONICA A5 HARD COVER NOTEBOOK | FSC certified  
paper | 21 x 14.6 cm | 0.402 kg CO<sub>2</sub>e



MOOD SCENE  
GENERATOR IMAGE

This exclusive design classic hard cover notebook is ideal for writing and sharing notes. This Journalbooks notebook has an A5 size reference, with an elastic closure. The interior holds 80 sheets (80gsm) of lined paper and features an expandable pocket at the back to keep small notes. Branded with your logo, it's the perfect way to promote your brand wherever ever you go.





The mark of responsible forestry

107091 | SPECTRUM A5 NOTEBOOK WITH BLANK PAGES | PU  
Plastic | 21 x 14.8 x 1.2 cm | 1.293 kg CO<sub>2</sub>e  
●●●●●●●●

NEW COLOURS



NEW COLOURS



106263 | EXECUTIVE A4 HARD COVER  
NOTEBOOK | Cardboard | 29.8 x 20.9 x 1.5 cm | 0.579 kg CO<sub>2</sub>e  
●●●



The mark of responsible forestry



Learn more >

107932 | MOLESKINE VEGEA CAPRI L SOFT COVER NOTEBOOK - RULED | PP  
Plastic | 13 x 1.5 x 21 cm | 1.693 kg CO<sub>2</sub>e

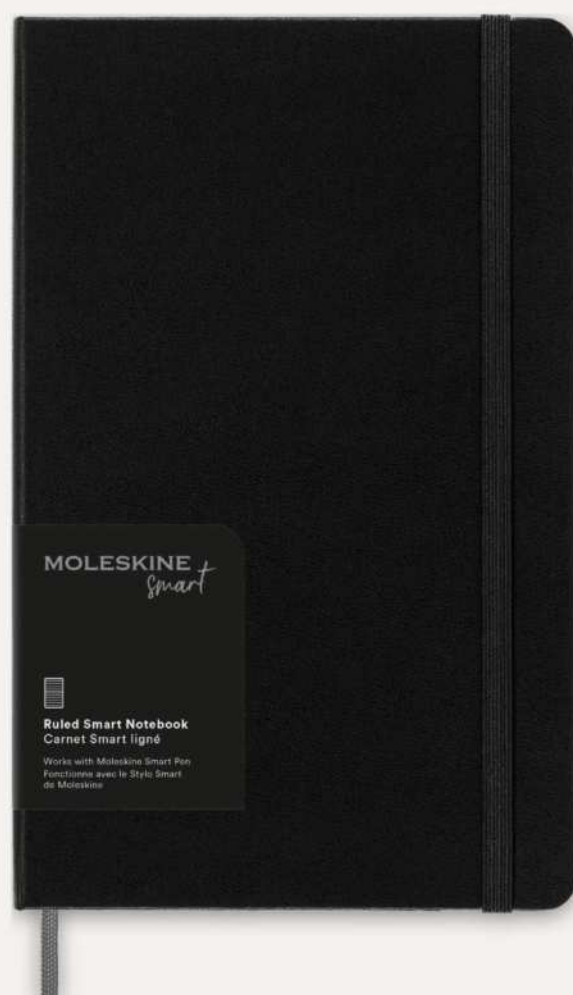


# THE LEGENDARY NOTEBOOK

107931 | MOLESKINE VEGEA BOA L SOFT COVER NOTEBOOK - RULED | PP  
Plastic | 13 x 1.5 x 21 cm | 1.693 kg CO<sub>2</sub>e







# BAGS







## BAGS

Selected with care: our new bags collection. With endless possibilities from backpacks to totes, more sustainable options like our new Recycled Classic Oregon drawstring backpack made from GRS-certified recycled cotton. The Ross travel accessories collection. Innovative designs like the modular Roam backpack or the introduction of a bags collection for Moleskine, each range with a distinctive personality. Elevate your brand visibility with our bags collection. Perfect for everyday use, they ensure your logo stands out wherever you go.



120715 | ROAM GRS RECYCLED MODULAR SLING BAG | GRS certified recycled polyester | 34.5 x 11 x 18.5 cm | 1.223 kg CO<sub>2</sub>e

# ROAM

## 3 + 1 MODULAR BACKPACK



120714 | ROAM GRS RECYCLED MODULAR BACKPACK | GRS certified recycled polyester | 30 x 18.5 x 55 cm | 2.904 kg CO<sub>2</sub>e



120716 | ROAM GRS RECYCLED MODULAR TOILETRY BAG | GRS certified recycled polyester | 23.5 x 5.5 x 16 cm | 0.611 kg CO<sub>2</sub>e





# Ross GRS RPET Travel accessories



**130047 | ROSS GRS RPET TOILETRY BAG 1.5L** | GRS certified recycled polyester | 20.5 x 7.5 x 13 cm | 1.220 kg CO<sub>2</sub>e  
●●●



The Ross travel accessories collection is made from GRS-certified recycled polyester. The chain of custody system ensures every stage of production (including branding) is documented and audited for transparency. Manufacturers must maintain records of the recycled inputs used and their sources. GRS certified products are made from verified recycled materials, with a traceable supply chain from the original source. To be GRS certified a product must contain at least 50% recycled materials. Third-party certifiers verify the chain of custody every year, confirming that recycled materials are properly tracked. The end-user can have confidence in the authenticity of GRS-labeled products.





130058 | ROSS GRS RPET RFID PASSPORT HOLDER | GRS certified recycled polyester | 10 x 1 x 14 cm | 0.214 kg CO<sub>2</sub>e  
●●●



130048 | ROSS GRS RPET TECH POUCH 1L | GRS certified recycled polyester | 21 x 14.5 x 4 cm | 0.400 kg CO<sub>2</sub>e  
●●●





**130057 | EXPEDITION PRO 17" GRS RECYCLED EXPANDABLE LAPTOP BACKPACK**  
**35L** | GRS certified recycled polyester | 31 x 15 x 48 cm | 4.126 kg CO<sub>2</sub>e



**120548 | HOSS 15.6" ROLL-UP LAPTOP BACKPACK**  
**12L** | Polyester | 25 x 14 x 43 cm | 2.781 kg CO<sub>2</sub>e



# OREGON



120735 | OREGON 140 G/M<sup>2</sup> GRS RECYCLED COTTON DRAWSTRING BAG | GRS  
certified recycled cotton | 33 x 44 cm | 0.438 kg CO<sub>2</sub>e  
●●●●●



In our pursuit of environmental responsibility.  
We launched new and recycled versions of our  
bestselling articles. We are striving to replace  
existing products with more sustainable  
alternatives.

DISCOVER  
THE OREGON  
COLLECTION

# ORISSA





61

GREEN POINTS

GLOBAL ORGANIC TEXTILE STANDARD

GOTS

Certified by Control Union

CU 1019665

**130060 | ORISSA 180 G/M<sup>2</sup> GOTS ORGANIC WIDE BOTTOM TOTE BAG 11L** | GOTS certified organic cotton | 38 x 9 x 42 cm | 0.653 kg CO<sub>2</sub>e

61

GREEN POINTS

GLOBAL ORGANIC TEXTILE STANDARD

GOTS

Certified by Control Union

CU 1019665

**130061 | ORISSA 180 G/M<sup>2</sup> GOTS ORGANIC FULL GUSSET TOTE BAG 14L** | GOTS certified organic cotton | 38 x 9 x 42 cm | 0.730 kg CO<sub>2</sub>e

61

GREEN POINTS

GLOBAL ORGANIC TEXTILE STANDARD

GOTS

Certified by Control Union

CU 1019665

**130062 | ORISSA 180 G/M<sup>2</sup> GOTS ORGANIC TOILETRY BAG 1L** | GOTS certified organic cotton | 24 x 6 x 17 cm | 0.154 kg CO<sub>2</sub>e

61

GREEN POINTS

GLOBAL ORGANIC TEXTILE STANDARD

GOTS

Certified by Control Union

CU 1019665

**130063 | ORISSA 180 G/M<sup>2</sup> GOTS ORGANIC LARGE ACCESSORY POUCH 3L** | GOTS certified organic cotton | 29 x 16 x 18 cm | 0.191 kg CO<sub>2</sub>e

# Madras GRS recycled cotton tote bag



120733 | MADRAS 140 G/M<sup>2</sup> GRS RECYCLED COTTON GUSSET TOTE BAG | GRS certified recycled cotton | 38 x 8.5 x 41 cm | 0.500 kg CO<sub>2</sub>e  
●●●●●●

The Madras gusset tote bag made from 100% GRS-certified recycled cotton is the perfect bag to give away during any event, or conference or to use as a shopping bag for small groceries. The cotton density of 140 g/m<sup>2</sup> cotton makes the bag sturdy, long-lasting, and suitable for carrying heavy items in the main compartment. With the 30 cm long shoulder handles this tote bag is easy to carry around. The print methods available for this tote bag are also certified, making sure that the entire supply chain is transparent and certified.





120734 | ODESSA 220 G/M<sup>2</sup> GRS RECYCLED COTTON LARGE TOTE BAG | GRS  
certified recycled cotton | 57 x 16.5 x 42 cm | 0.500 kg CO<sub>2</sub>e  
○●●●●○





[Learn more >](#)

# INTRODUCE YOUR DEVICES TO MOLESKINE



130067 | **MOLESKINE CLASSIC VERTICAL DEVICE BAG** | PU Plastic coated polyester | 30 x 8.5 x 40 cm | 6.409 kg CO<sub>2</sub>e

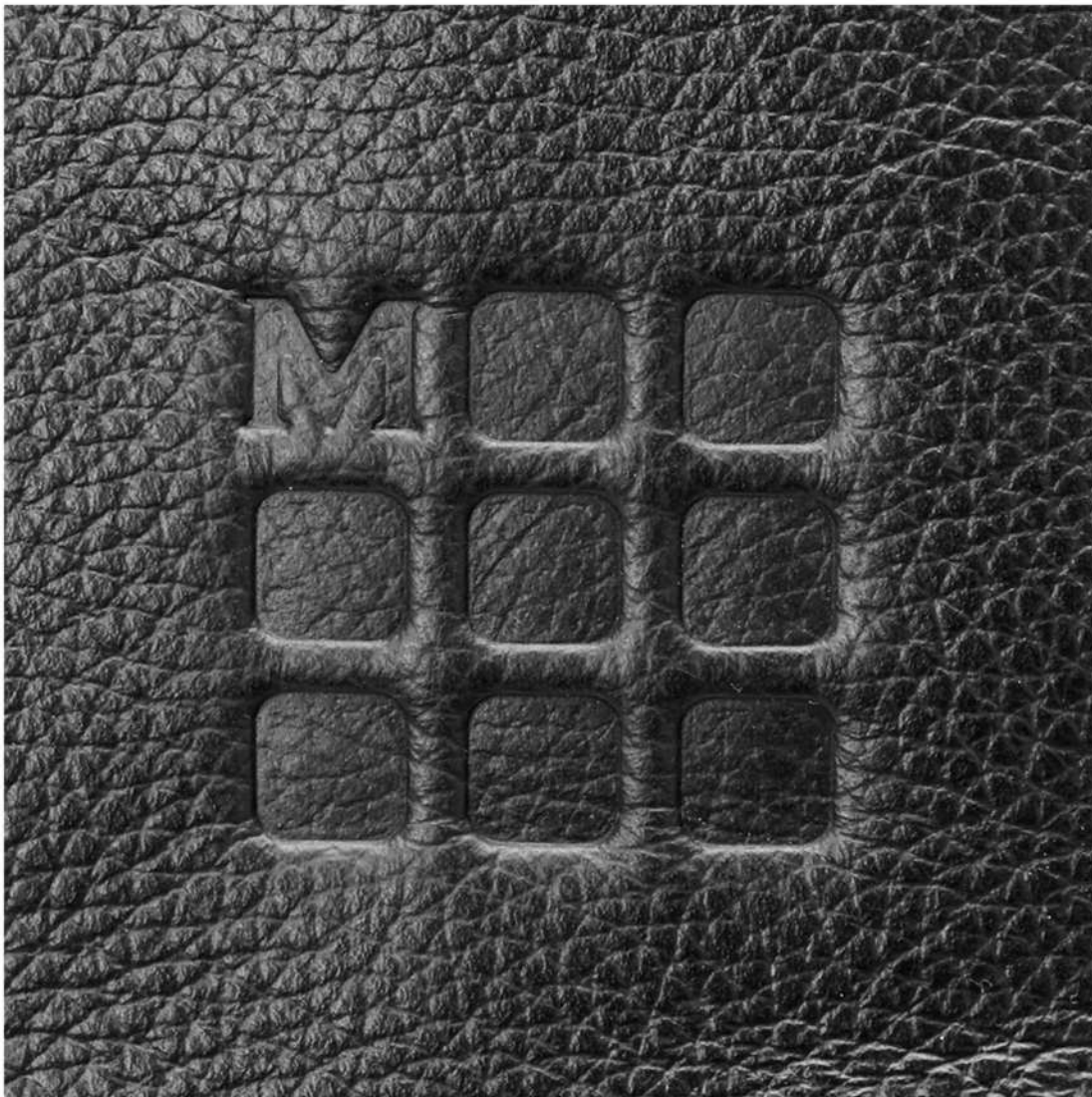




MADE IN  
EUROPE

130068 | MOLESKINE CLASSIC BACKPACK | 33 x 12 x 41 cm

# YOUR LIFE IS ON YOUR SHOULDERS



MADE IN  
EUROPE

130070 | MOLESKINE CLASSIC LEATHER  
BACKPACK | Leather | 32 x 12 x 37 cm | 12.184 kg CO<sub>2</sub>e





MADE IN  
EUROPE



130071 | MOLESKINE CLASSIC PRO BACKPACK







130072 | MOLESKINE CLASSIC PRO LEATHER BACKPACK



# CLASSIC PRO COLLECTON

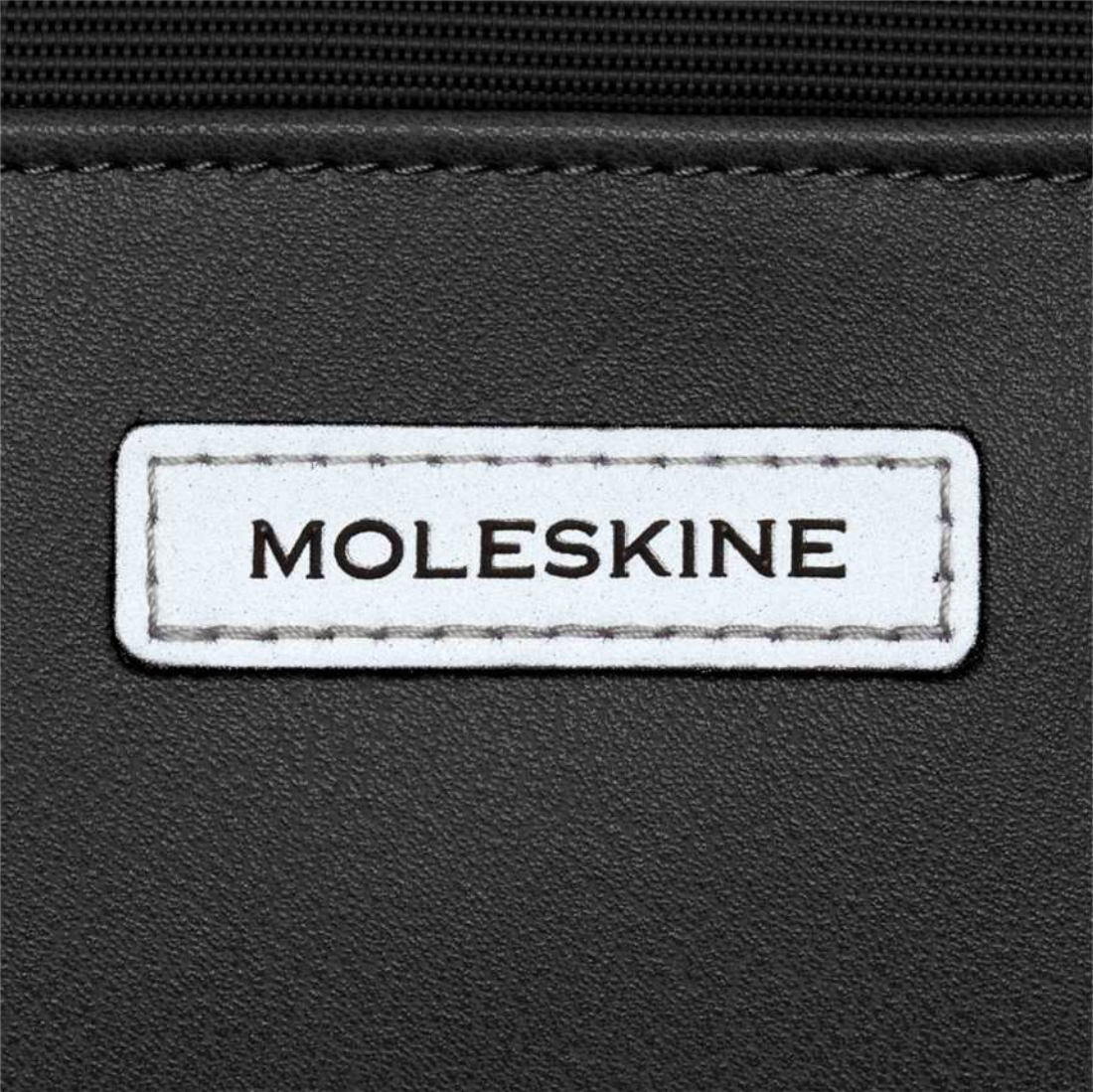




# METRO COLLECTION

130073 | MOLESKINE METRO ROLLTOP BACKPACK









**120729 | THULE SUBTERRA 2 POWERSHUTTLE  
MINI** | Polyester | 11.4 x 4.5 x 21.5 cm | 0.899 kg CO<sub>2</sub>e



**120730 | THULE SUBTERRA 2 POWERSHUTTLE  
MEDIUM** | Polyester | 22 x 5 x 14.5 cm | 0.903 kg CO<sub>2</sub>e



**120728 | THULE SUBTERRA 2 BACKPACK  
21L** | Polyester | 32 x 20 x 46 cm | 7.639 kg CO<sub>2</sub>e



**120743 | THULE SUBTERRA 2 CARRY ON SPINNER  
SUITCASE** | Polyester | 38 x 26 x 57 cm | 20.324 kg CO<sub>2</sub>e



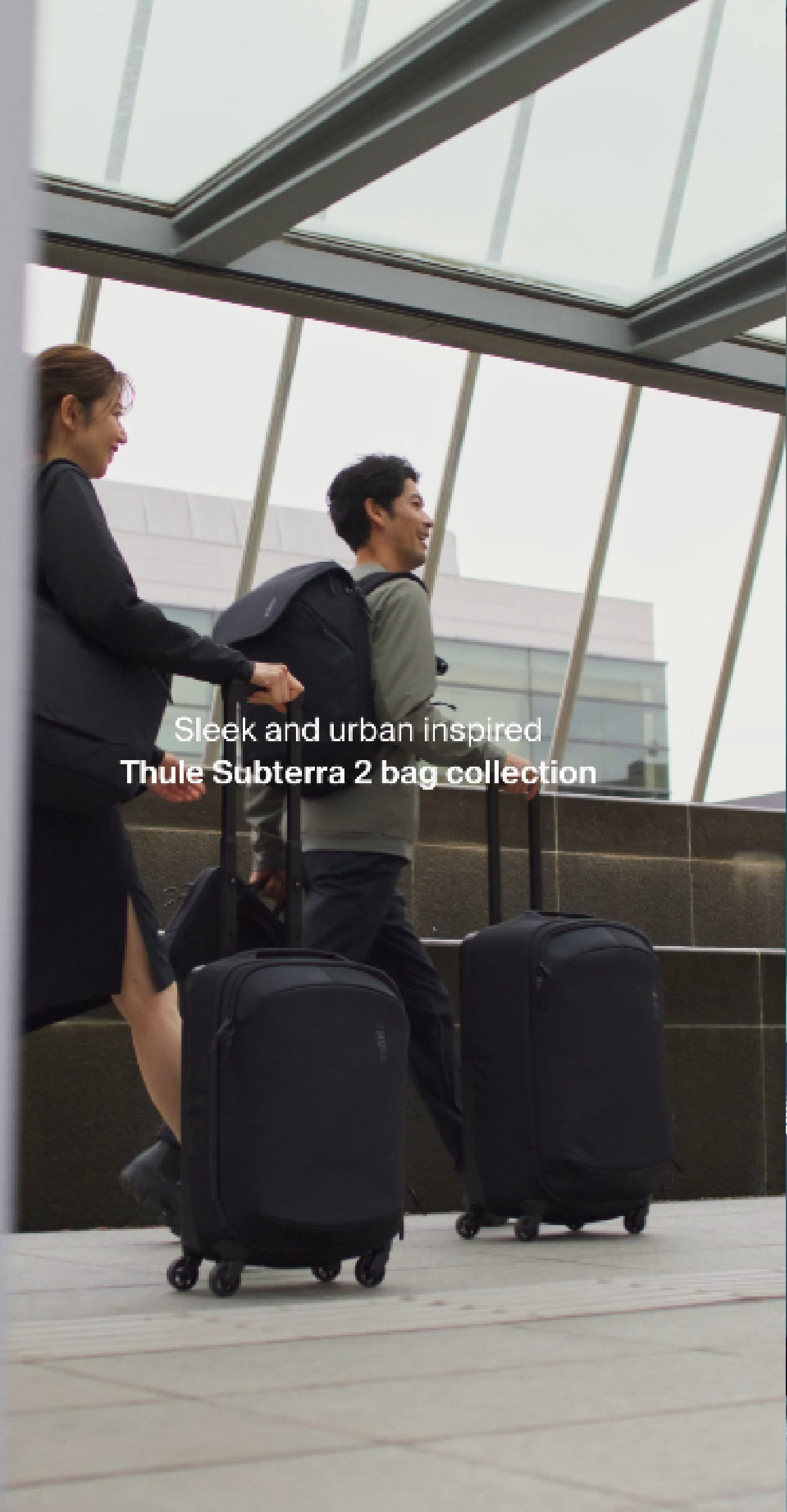
# SUBTERRA 2

Sleek, versatile and city inspired items in the updated Thule Subterra 2 collection use bluesign® approved materials and nearly every item has achieved a full bluesign® product certification.

**Learn more >**

Sleek and urban inspired  
**Thule Subterra 2 bag collection**

**THULE**®  
SWEDEN





# INVIGO

- RECYCLED MATERIALS THAT GIVE OLD PLASTICS NEW LIFE
- LONG-LASTING DESIGN TO STAND THE TEST OF TIME
- SOPHISTICATED LOOKS AND FUNCTIONALITY FOR THE MODERN PROFESSIONAL

**Learn more >**





**120725 | CASE LOGIC INVIGO 15.6" RECYCLED LAPTOP ATTACHE BAG** | Recycled Polyester | 40.5 x 29.5 x 5.5 cm

**120727 | CASE LOGIC INVIGO 15.6" RECYCLED LAPTOP SLEEVE** | Recycled Polyester | 40.5 x 5.5 x 29.5 cm | 0.670 kg CO<sub>2</sub>e



**120742 | CASE LOGIC INVIGO CONVERTIBLE TOTE BAG** | Recycled Polyester | 36.5 x 18 x 43 cm | 1.823 kg CO<sub>2</sub>e



**120741 | CASE LOGIC INVIGO 15" BACKPACK** | Recycled Polyester | 30.5 x 19 x 46 cm | 1.876 kg CO<sub>2</sub>e

# TECHNOLOGY







## TECHNOLOGY

Technology has become an integral part of our daily lives, changing the way we work, live and communicate.

To fit every need and budget, the possibilities are endless; from more sustainable options with our new Recycled Classics range of powerbanks, to cables and charges to stay connected. And from our collection of Prixtion technology items, designed for life at home or on the go, to Xtorm who gives you and your devices #MoreEnergy, exactly when you need it. A collection designed to match your brand identity.



Certified by Control Union  
CU 1019665

**124383 | ASAMA 5000 MAH TYPE-C RECYCLED PLASTIC POWER BANK** | Recycled ABS Plastic | 9 x 6.3 x 1.4 cm | 4.753 kg CO<sub>2</sub>e



**MOOD SCENE  
GENERATOR IMAGE**



Certified by Control Union  
CU 1019665

**124380 | PEP 4000 MAH TYPE-C RECYCLED ALUMINIUM POWER BANK** | Recycled Aluminium | 11 x 6.8 x 1 cm | 4.874 kg CO<sub>2</sub>e







Certified by Control Union  
CU 1019665

**124384 | JUICE 4000 MAH TYPE-C RECYCLED ALUMINIUM WIRELESS POWER BANK** | Recycled Aluminium | 12 x 6.8 x 1 cm | 4.914 kg CO<sub>2</sub>e  
●●●●●

**MOOD SCENE  
GENERATOR IMAGE**



Certified by Control Union  
CU 1019665

**124385 | JUICE 8000 MAH TYPE-C RECYCLED ALUMINIUM WIRELESS POWER BANK** | Recycled Aluminium | 15 x 7.4 x 1.2 cm | 5.133 kg CO<sub>2</sub>e  
●●●●●



58  
GREEN  
POINTS



RECYCLED BLENDED  
claim standard  
Certified by Control Union  
CU 1019665



124382 | METAL 4-IN-1 RECYCLED ALUMINIUM CHARGING CABLE WITH KEYCHAIN

Recycled Aluminium | 19.5 x 1.7 x 0.7 cm | 4.638 kg CO<sub>2</sub>e





58  
GREEN  
POINTS



RECYCLED BLENDED  
claim standard  
Certified by Control Union  
CU 1019665



124386 | VERSATILE 5-IN-1 RECYCLED ALUMINIUM CHARGING CABLE

Recycled Aluminium | 104 x 1.6 x 0.7 cm | 0.141 kg CO<sub>2</sub>e



MOOD SCENE  
GENERATOR IMAGE



43  
GREEN  
POINTS



1PX162 | SCX.DESIGN C50 5-IN-1 FAST CHARGING 100W/5A CABLE WITH DIGITAL DISPLAY

Recycled PET Plastic | 20 x 8 cm



80





Certified by Control Union  
CU 1019665



**124387 | ESSENCE 15W BAMBOO WIRELESS CHARGING PAD** | FSC certified bamboo | Ø 90 x 9 cm | 0.147 kg CO<sub>2</sub>e



**124371 | MENLO RCS RECYCLED PLASTIC WIRELESS MOUSE** | Recycled ABS Plastic

# PRIXTON



12  
GREEN  
POINTS

1PA180 | PRIXTON SWB32 ALEXA  
SMARTWATCH | Plastic | 11 x 7.5 x 5.5 cm | 4.824 kg CO<sub>2</sub>e



12  
GREEN  
POINTS

1PA181 | PRIXTON SWB33  
SMARTWATCH | Plastic | 56.5 x 39 x 34.9 cm | 4.880 kg CO<sub>2</sub>e





**1PA172 | PRIXTON DV800 5K DUAL SCREEN ACTION CAMERA** | Plastic | 10 x 9.4 x 11.4 cm | 5.612 kg CO<sub>2</sub>e



**1PA173 | PRIXTON DV670 4K DUAL SCREEN ACTION CAMERA** | Plastic | 10 x 9.4 x 11.4 cm | 5.612 kg CO<sub>2</sub>e



**1PA174 | PRIXTON DELTA DRONE** | Plastic | 22 x 18 x 7 cm | 6.092 kg CO<sub>2</sub>e



**1PA175 | PRIXTON ALPHA PRO DRONE** | Plastic | 21.5 x 17 x 7 cm | 5.822 kg CO<sub>2</sub>e

# PRIXTON

12  
GREEN  
POINTS



**1PA176 | PRIXTON TWS162**  
**EARBUDS** | Plastic | 12.9 x 8.55 x 3.85 cm | 4.732 kg CO<sub>2</sub>e  
●○

12  
GREEN  
POINTS



**1PA169 | PRIXTON DRAGON GAMING KIT** | ABS Plastic - PC  
Plastic | 46.5 x 14.5 x 21.2 cm | 12.378 kg CO<sub>2</sub>e  
●

12  
GREEN  
POINTS



**1PA171 | PRIXTON NOVA 10,1" TABLET 4G**  
**4/64GB** | Plastic | 32.2 x 18.9 x 3.7 cm | 7.242 kg CO<sub>2</sub>e  
●





1PA168 | PRIXTON PARTYGO KARAOKE | ABS  
Plastic | 29.6 x 18 x 27.8 cm | 16.084 kg CO<sub>2</sub>e



1PA182 | PRIXTON BOOGIE CD  
PLAYER | Plastic | 23.8 x 19.1 x 14.7 cm | 9.838 kg CO<sub>2</sub>e



1PA166 | PRIXTON VC600 TURNTABLE | ABS  
Plastic | 29.5 x 21 x 7 cm | 8.242 kg CO<sub>2</sub>e



# PRIXTON



 12  
GREEN  
POINTS



**1PA167 | PRIXTON ESSENCE HUMIDIFIER** | ABS Plastic - PC  
Plastic | 21.5 x 8.6 x 18.2 cm | 7.208 kg CO<sub>2</sub>e

 12  
GREEN  
POINTS

NEW  
COLOURS



**1PA130 | PRIXTON PRADO 10" WIFI DIGITAL PHOTO FRAME** | ABS  
Plastic | 26.5 x 18 x 2.2 cm | 4.146 kg CO<sub>2</sub>e





1PA177 | PRIXTON SAHARA  
DEHUMIDIFIER | Plastic | 18.6 x 15.5 x 24.6 cm | 9.488 kg CO<sub>2</sub>e  
○



1PA170 | PRIXTON BT300 WINDOW CLEANING ROBOT | ABS  
Plastic | 29.3 x 23 x 10 cm | 13.158 kg CO<sub>2</sub>e  
●



1PA179 | PRIXTON THOR CYCLONE VACUUM  
CLEANER | Plastic | 65 x 28 x 14 cm | 16.857 kg CO<sub>2</sub>e  
●



1PA178 | PRIXTON CAPRI COFFEE MAKER WITH  
GRINDER | Plastic | 29 x 18.1 x 38.5 cm | 14.611 kg CO<sub>2</sub>e  
●





**43**  
**GREEN**  
**POINTS**

**124410 | XTORM FS5W051 5.000 MAH MAGNETIC WIRELESS POWER BANK** | Recycled ABS Plastic | 10.7 x 6.8 x 1.3 cm | 4.811 kg CO<sub>2</sub>e



**43**  
**GREEN**  
**POINTS**

**124413 | XTORM FS5W101 10.000 MAH MAGNETIC WIRELESS POWER BANK** | Recycled ABS Plastic | 11.1 x 7.2 x 2.4 cm | 5.033 kg CO<sub>2</sub>e





124409 | XTORM GO2 12W 5.000 MAH FAST CHARGE POWER BANK | Recycled  
ABS Plastic | 9.35 x 6.3 x 1.55 cm | 4.793 kg CO<sub>2</sub>e  
●●○

[Learn more >](#)

WE  
GIVE YOU  
#MoreEnergy



124411 | XTORM XG210 GO2 15W 10.000 MAH FAST CHARGE POWER  
BANK | Recycled ABS Plastic | 14.2 x 6.8 x 1.55 cm | 4.977 kg CO<sub>2</sub>e  
●●●

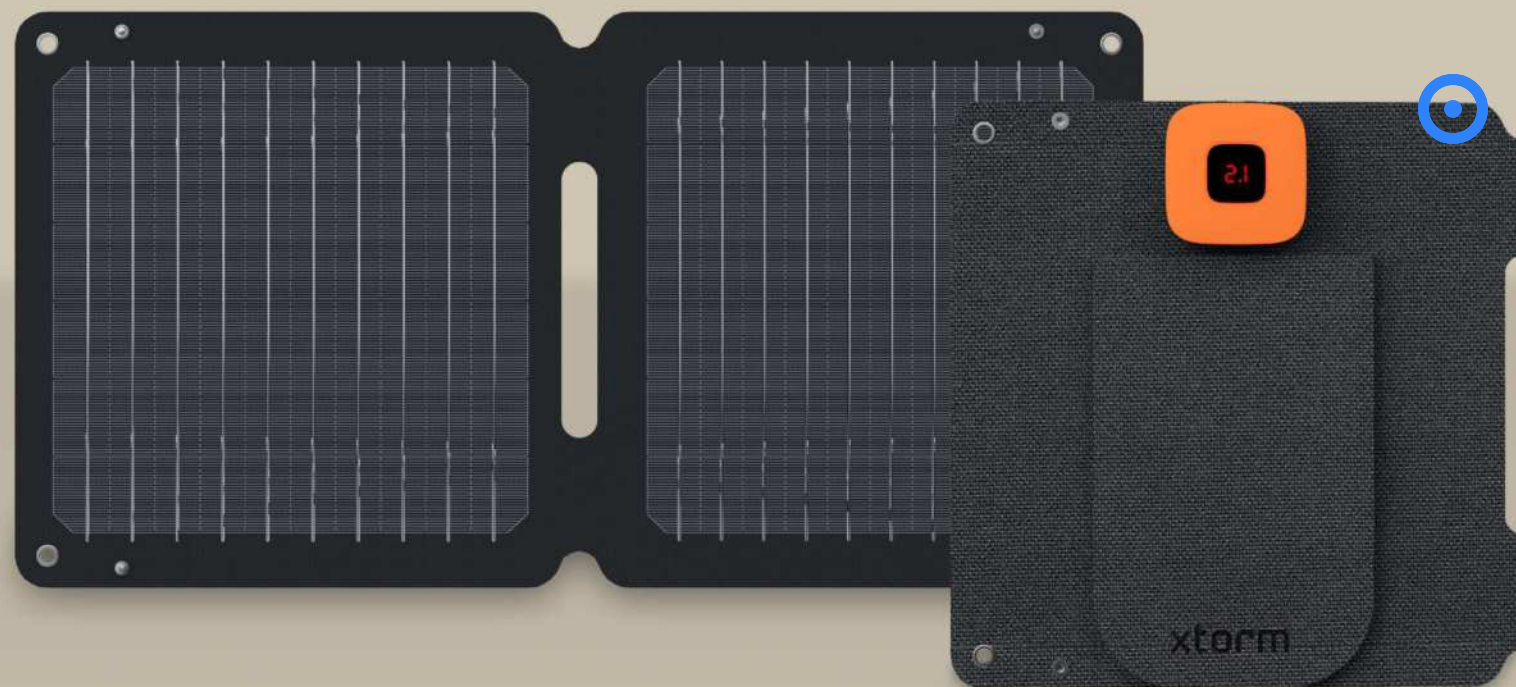


124412 | XTORM XG220 GO2 15W 20.000 MAH FAST CHARGE POWER  
BANK | Recycled ABS Plastic | 14.2 x 7.2 x 2.76 cm | 5.304 kg CO<sub>2</sub>e  
●●●

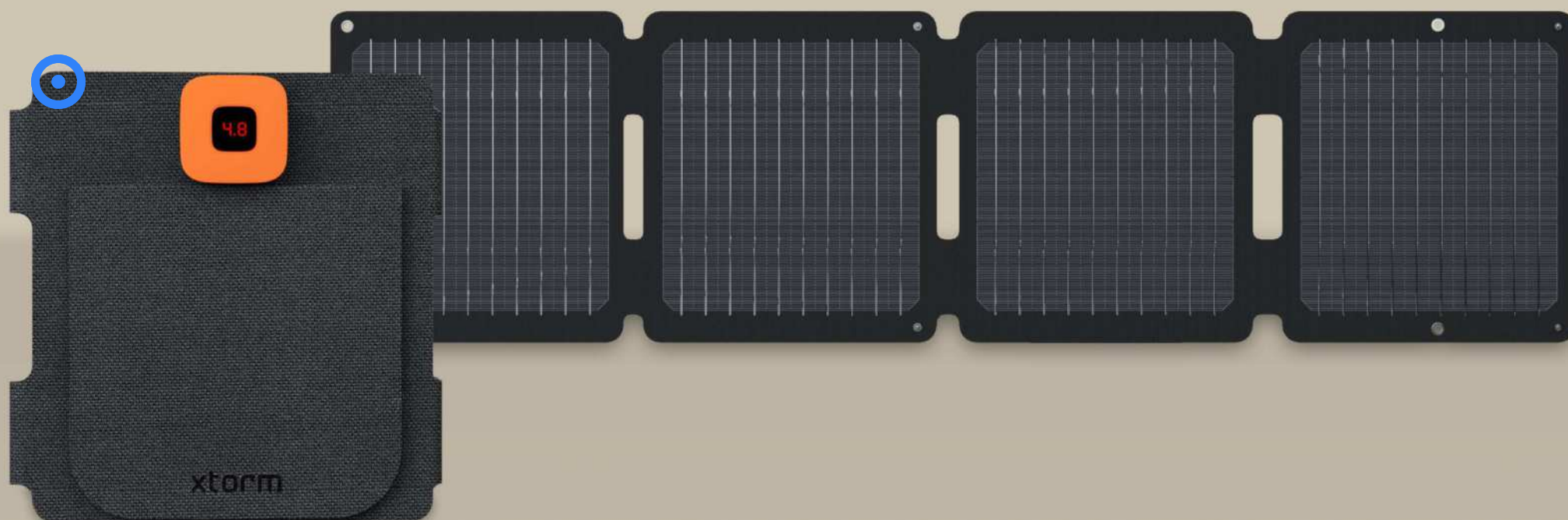








124414 | XTORM XR2S14 SOLARBOOSTER 14W FOLDABLE SOLAR PANEL | ETFE  
(Ethylene Tetrafluoroethylene)



124415 | XTORM XR2S28 SOLARBOOSTER 28W FOLDABLE SOLAR PANEL | ETFE  
(Ethylene Tetrafluoroethylene)



# HOME & KITCHEN







## HOME & KITCHEN

Provide the perfect gifts with our new Home & Kitchen collection. Discover our new brand: Original home.

A home accessory collection designed to create a greener planet. Gifts with a story, using materials with a low carbon footprint, handcrafted, and supporting small entrepreneurs with a sustainable and/or social mission and applying the principles of fair trade. Or our endless possibilities on more sustainable options such as aprons and towels made from recycled cotton, the Mangi lunchboxes great for on the go and homemade meals, a wine collection, and much more. Branded with your logo, it's the perfect way to promote your brand.

# SEASONS

113378 | FLAVO PEPPER AND SALT MILL | Acacia wood | Ø 5.3 x 21.3 cm | 0.593 kg CO<sub>2</sub>e



The mark of responsible forestry











**113326 | ALORA 200 G/M<sup>2</sup> RECYCLED COTTON KITCHEN TOWEL** | GRS certified recycled cotton | 50 x 50 cm

●●●●●





**113325 | NIA 200 G/M<sup>2</sup> RECYCLED COTTON APRON** | GRS certified recycled cotton | 100 x 70 cm

●●●●●



SEASONS



113371 | SONORA ACACIA WOOD CUTTING BOARD | Acacia wood | 32 x 24 x 1.2 cm | 1.380 kg CO<sub>2</sub>e





SEASONS



113388 | **TIMBERITO PIZZA SET** | Acacia wood | 47.2 x 35.2 x 1.5 cm | 0.240 kg CO<sub>2</sub>e











120665 | FELTA 75 CL GRS RECYCLED FELT WINE BAG | GRS certified recycled polyester | 15 x 42 cm | 0.153 kg CO<sub>2</sub>e



113387 | VINO WINE HOLDER SET | Wood | 0.406 kg CO<sub>2</sub>e



113390 | ROSSO 2-PIECE WINE GLASS SET | Glass | 23.5 x 8.5 cm | 0.756 kg CO<sub>2</sub>e



MOOD SCENE  
GENERATOR IMAGE



113384 | FROZ STAINLESS STEEL ICE CUBES SET | Stainless Steel | 10 x 12 cm | 1.049 kg CO<sub>2</sub>e



113383 | PEDRO STONE ICE CUBES SET | Cotton | 11 x 7.5 cm | 0.900 kg CO<sub>2</sub>e



MOOD SCENE  
GENERATOR IMAGE



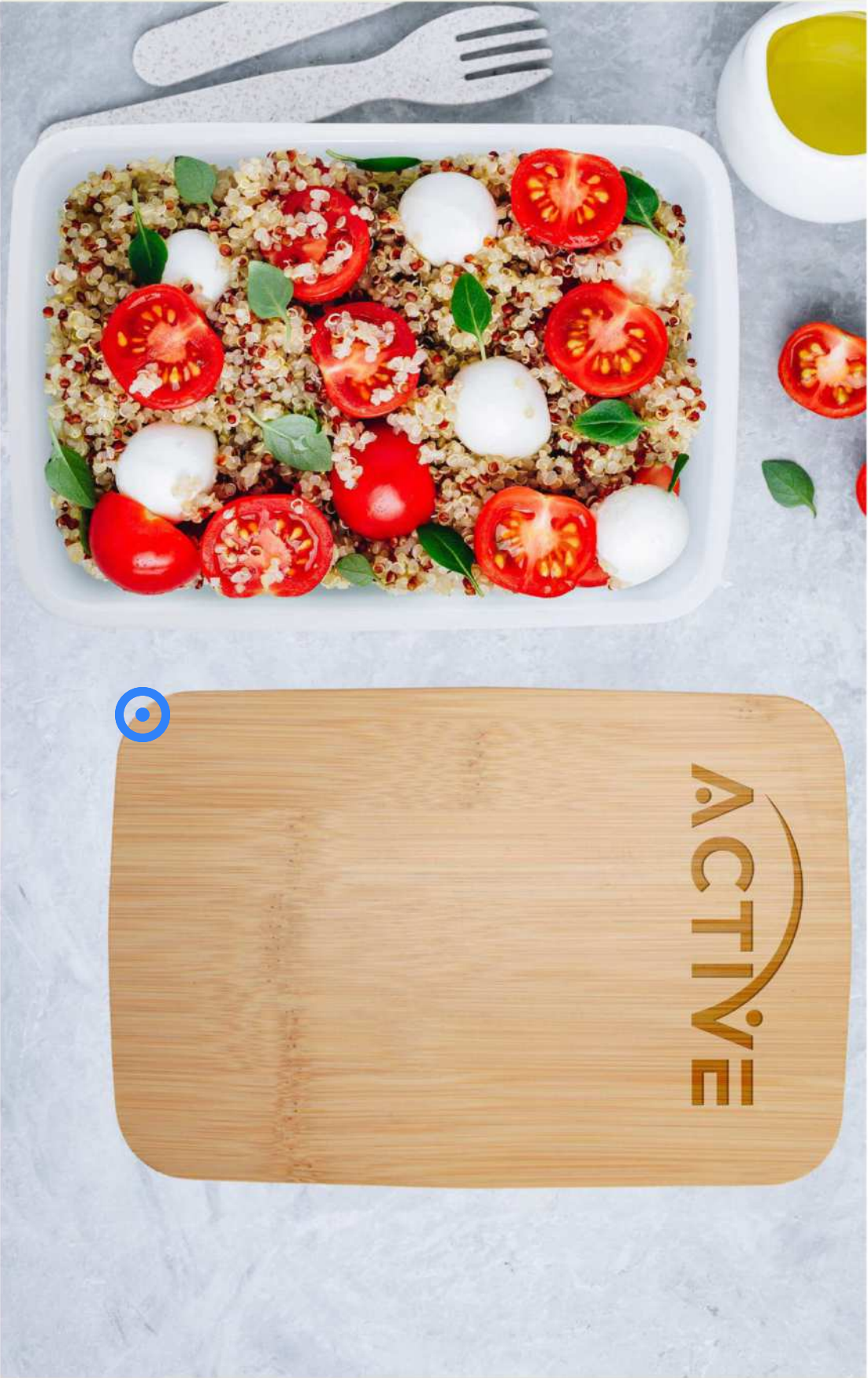
113381 | NAVAJO PIZZA CUTTER | Bamboo | 8.5 x 7.5 x 1.1 cm | 0.724 kg CO<sub>2</sub>e



113380 | LEVO BAMBOO BOTTLE OPENER WITH  
LEVEL | Bamboo | 6 x 8 x 1.5 cm | 0.094 kg CO<sub>2</sub>e







113361 | MANGI 750 ML LUNCH BOX | Recycled Plastic | 19 x 13 x 6 cm | 0.536 kg CO<sub>2</sub>e



113369 | MANGI 500 ML LUNCH BOX | Recycled Plastic | 11.2 x 5 x 16.5 cm | 4.889 kg CO<sub>2</sub>e







The mark of  
responsible forestry

113363 | ROBY 750 ML SALAD BOWL | Borosilicate glass | 1.829 kg CO<sub>2</sub>e











# originalhome

1 0 0 % E C O D E S I G N

## ORIGINAL HOME

Originalhome is not just another interior design & gifts brand. A purpose-driven company designed to create a greener and people friendlier planet.

Products are made from rest and waste materials, using low-impact traditional crafts. We partner with fair trade artisan communities to create more job opportunities in the challenging, rural areas of Indonesia, Bangladesh, India, and Tanzania.

**Learn more >**



# originalhome

100% ECO DESIGN



113406 | ORIGINAL HOME BOTTLE VASE | Recycled glass



# UPCYCLED WINE BOTTLES

The drinking glasses and carafes are made from upcycled empty wine bottles, a waste product from the tourism industry of Zanzibar.

When the transfer buses drop the tourists off at the hotels, the empty buses are filled with empty wine bottles to be dropped at the upcycling project on the way back.

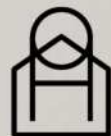
This project prevents this litter from ending up in the sea or landfills and locals becoming more aware of the fact that litter has value.



113405 | ORIGINAL HOME GLASS SET | Recycled glass





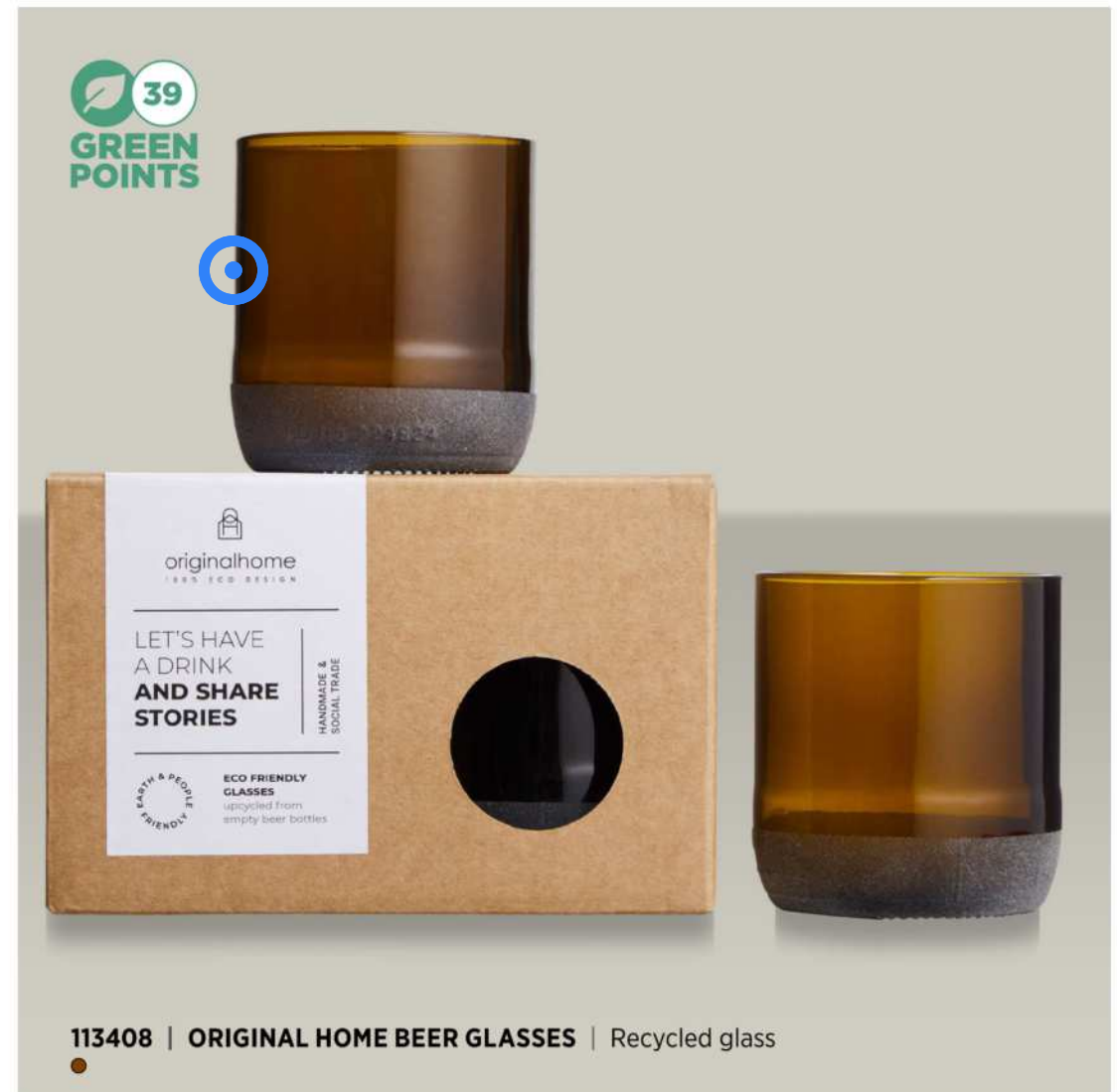


originalhome  
100% ECO DESIGN



113407 | ORIGINAL HOME WATER CARAFE | Recycled glass





# UPCYCLED BEER BOTTLES

The drinking glasses and carafes are made from upcycled empty beer bottles. A waste product from the hospitality industry of Goa, India, leaving lots of waste around the area, and litter ends up in landfills or nature. Giving a second life to empty beer bottles contributes to waste reduction and cleans up the area.

The specialized trash pickers collect the bottles and are paid a commercial price so that it becomes a profitable activity.

Aside from preventing this litter from ending up in the sea or landfills and helping more people with jobs, this project creates awareness with locals of the fact that litter has value.





113410 | ORIGINAL HOME WOODEN TRAY | Wood



originalhome  
100% ECO DESIGN



# KITCHENWARE

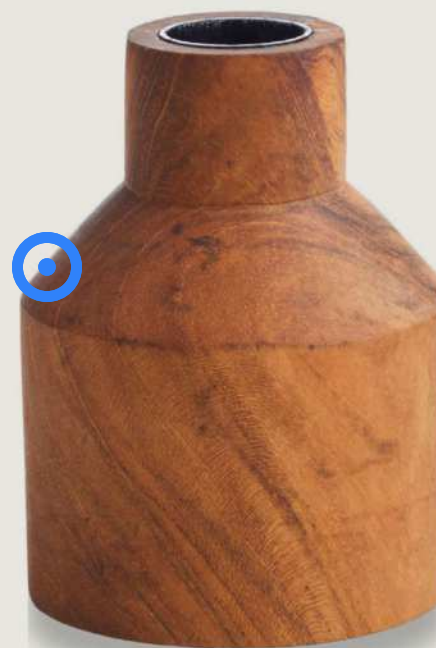
Teak root wood is used as raw material for the kitchenware collection. Teak root is a waste product of the teak plantations of Java, Indonesia. The roots have the same properties as teak wood which is a strong and extremely durable material and usually considered a waste since they need to be unearthed for new plantations. The entire production is executed by hand without any electricity to limit the impact on the environment. Local villagers collect the roots from the plantations and clean them. Craftspeople from the small workshop carve them into differently shaped kitchenware items.



113409 | ORIGINAL HOME CUTTING BOARD | Wood







126326 | ORIGINAL HOME DINNER CANDLE HOLDER - M | Wood

# CANDLE HOLDER

Teak root wood is used as raw material. It is a waste product of the teak plantations of Java, Indonesia. The roots have the same properties as teak wood which is a strong and extremely durable material and usually considered a waste since they need to be unearthed for new plantations. The entire production is executed by hand without any electricity to limit the impact on the environment.



originalhome  
100% ECO DESIGN



# CANDLES

Candles are made from palm kernel wax. They are 100% natural, vegan-approved, unscented, and have a clean burn. This means that these candles emit less CO2 compared to a paraffin candle. Palm kernel wax is the most sustainable wax as it doesn't contain any chemical, synthetic, or animal-based reagents and the palm is a highly efficient crop. The candles are poured by hand in a small factory in Java, Indonesia.



originalhome  
100% ECO DESIGN



126323 | ORIGINAL HOME DINNER CANDLE MATCHA | Palm kernel wax







originalhome

100% ECO DESIGN







126324 | ORIGINAL HOME XMAS TREE CANDLE MATCHA - M | Palm kernel wax



# CANDLES

Candles are made from palm kernel wax. They are 100% natural, vegan-approved, unscented, and have a clean burn. This means that these candles emit less CO2 compared to a paraffin candle.

Palm kernel wax is the most sustainable wax as it doesn't contain any chemical, synthetic, or animal-based reagents and the palm is a highly efficient crop. The candles are poured by hand in a small factory in Java, Indonesia.



126325 | ORIGINAL HOME XMAS TREE CANDLE MATCHA - L | Palm kernel wax













113328 | DENALI GRS HOODIE BLANKET  
●●●









# CLOTHING





## CLOTHING

Selected with care are our new additions to the Elevate collection; The Clyde unisex rugby polo sweatshirt is made from a heavy jersey of 100% organic cotton for comfort, combining a classic design with modern comfort. Or the Evans sherpa fleece made from GRS recycled polyester, with a contrast fabric of 100% GRS recycled nylon. Whether exploring the great outdoors or simply lounging at home, the Evans unisex sherpa fleece promises unparalleled comfort and modern style. Discover our colour additions to Elevate's beanie collection of Irwin and Boreas. Mix and match, the possibilities are endless.





38237 | CLYDE UNISEX RUGBY POLO SWEATSHIRT | GOTS certified organic cotton







39476 | EVANS UNISEX SHERPA FLEECE | GRS certified recycled polyester  
 ●●●●●●●●





NEW  
COLOURS



111043 | IRWIN BEANIE | Acrylic | 19 x 23 cm | 0.167 kg CO<sub>2</sub>e







NEW  
COLOURS



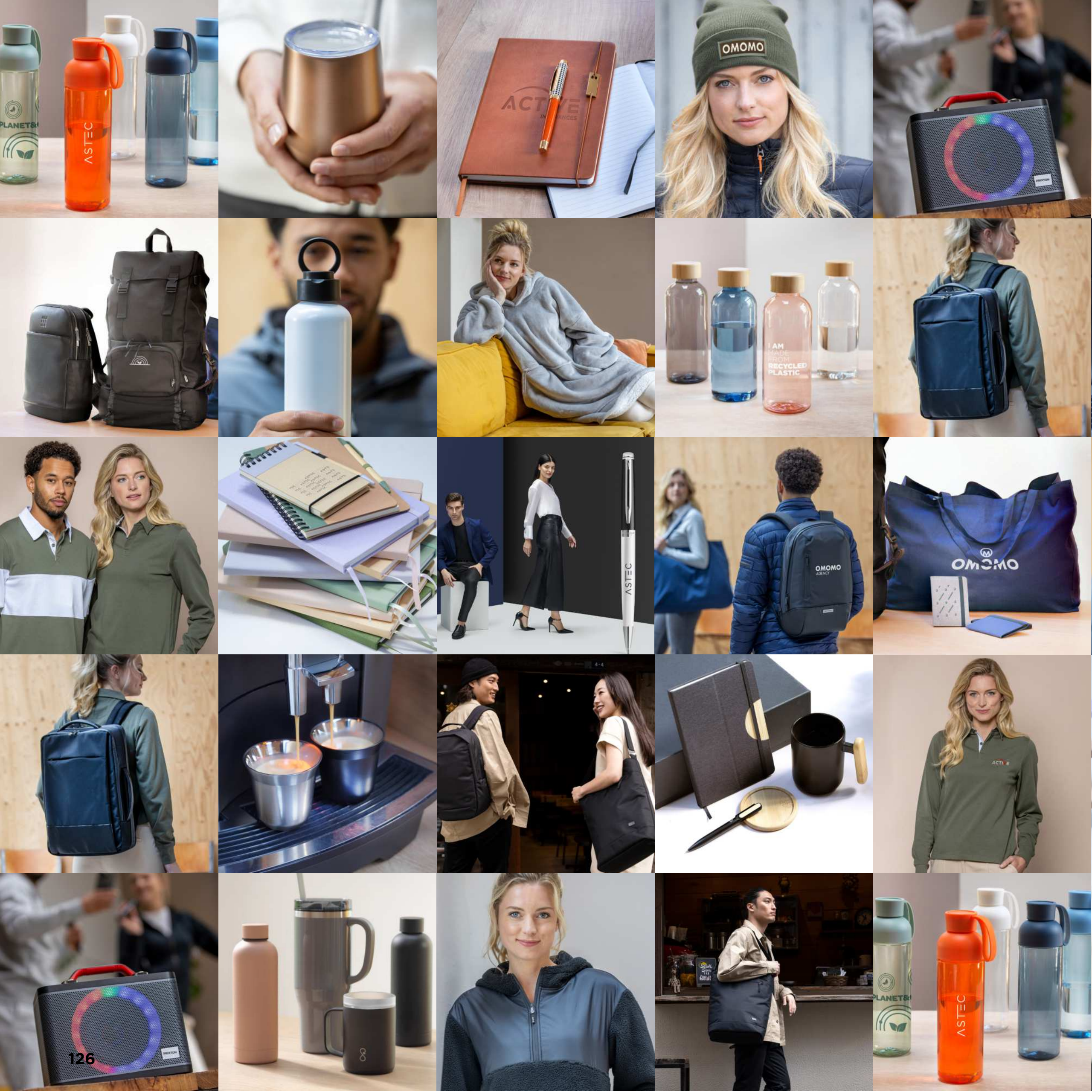
38676 | BOREAS BEANIE WITH PATCH | Acrylic | 19 x 23 cm | 0.154 kg CO<sub>2</sub>e



ELEVATE

Learn more >









## Disclaimer

- Printing shown on products represent a variety of techniques and positions.
- Other print techniques and positions available.
- Contact us for more information
- Images representing people and activities in this catalogue are for inspiration purposes only. Products without article codes are not for sale. The images and logos, featured on the products are for visual purposes only and may differ from the recommended print technique. Licensed products are reserved for B2B activity only and cannot under any circumstances be offered for retail sale. Only products listed with item number are available.
- Some brands are not available in all regions.
- Printing and typesetting errors reserved. The seller accepts no liability for the consequences of printing and typesetting errors.





**PF Concept**  
**Your product media expert**